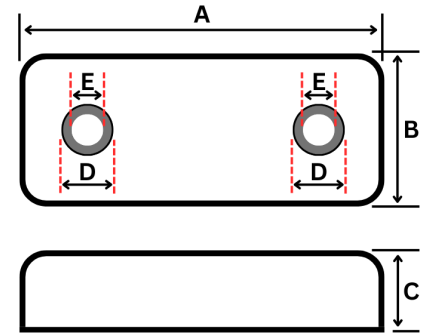


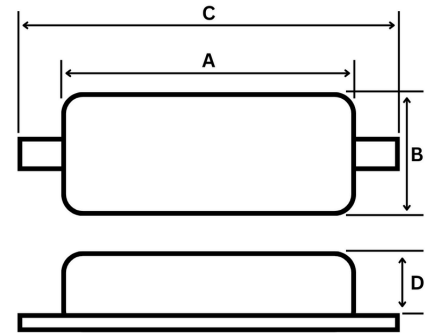
Zinc Anode Bold Type

Type	Dimensions (mm)				
	A	B	C	D	E
B2	150	75	24.72	37.83	14.49
B3	200	100	20.18	37.25	13.57
B4	197	98	34.70	37.71	14.20
B6	300	150	20.05	42.88	21.30
B8	304	152	25.41	48.10	22.06
B9	300	150	29.60	48.02	21.69



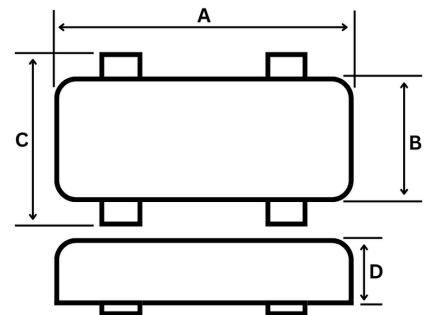
Zinc Anode Welded Type S2-S4

Type	Dimensions (mm)			
	A	B	C	D
S2	148	70	240	27.90
S3	195	98	300	24.87
S4	195	97	297	35.13



Zinc Anode Welded Type S6-S9E

Type	Dimensions (mm)			
	A	B	C	D
S6	300	148	248	21.74
S8	298	146	250	25.53
S9	305	155	285	28.25
S9E	300	150	282	40.65



Aluminium Anode

Type	Dimensions (mm)			
	A	B	C	D
W130	255	152	405	30.93
W111	385	145	550	32.30
W114	540	130	700	48.08
W117	540	130	700	55.25
W119	555	140	705	

